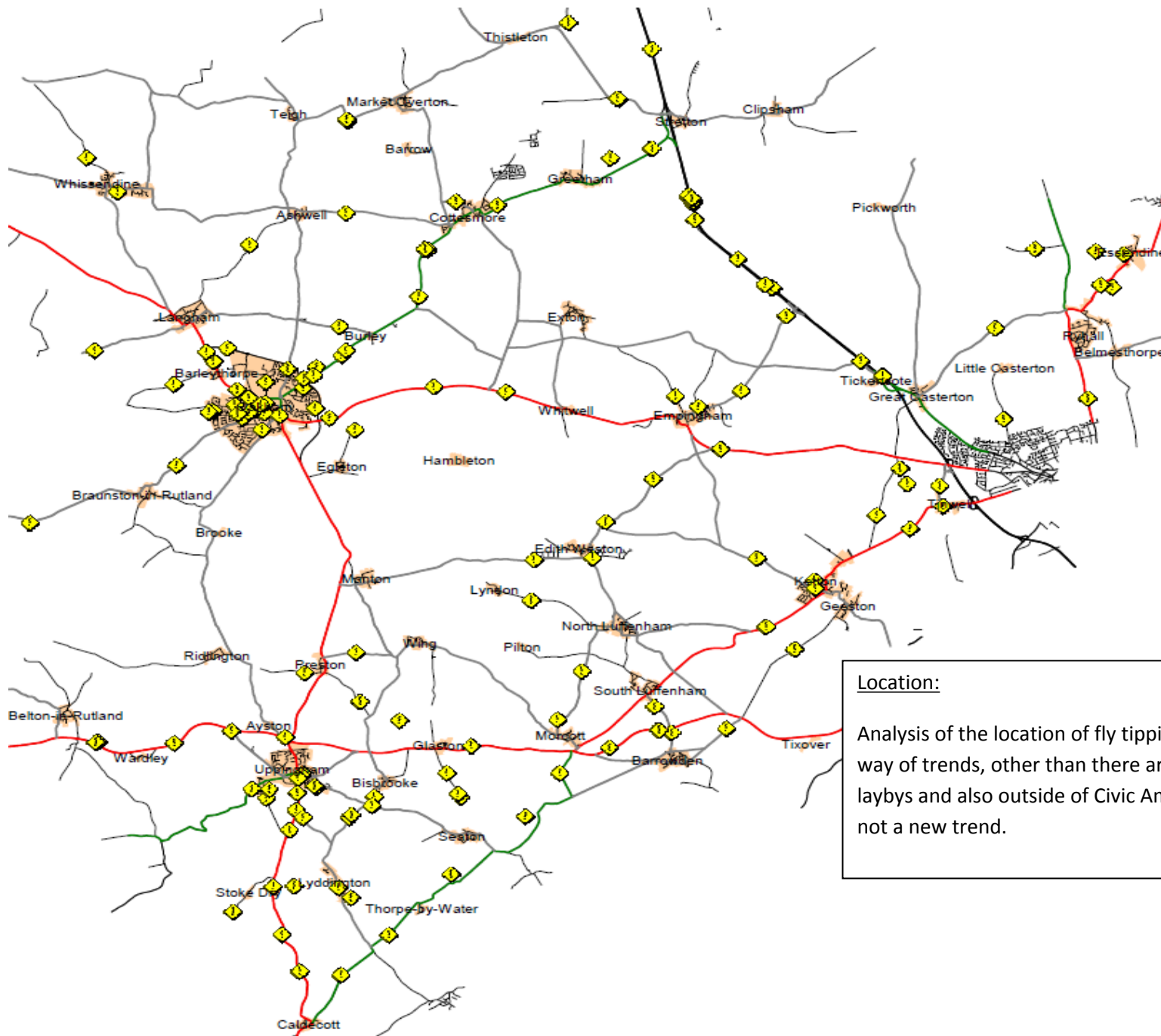


Report No: 36/2017

Appendix B

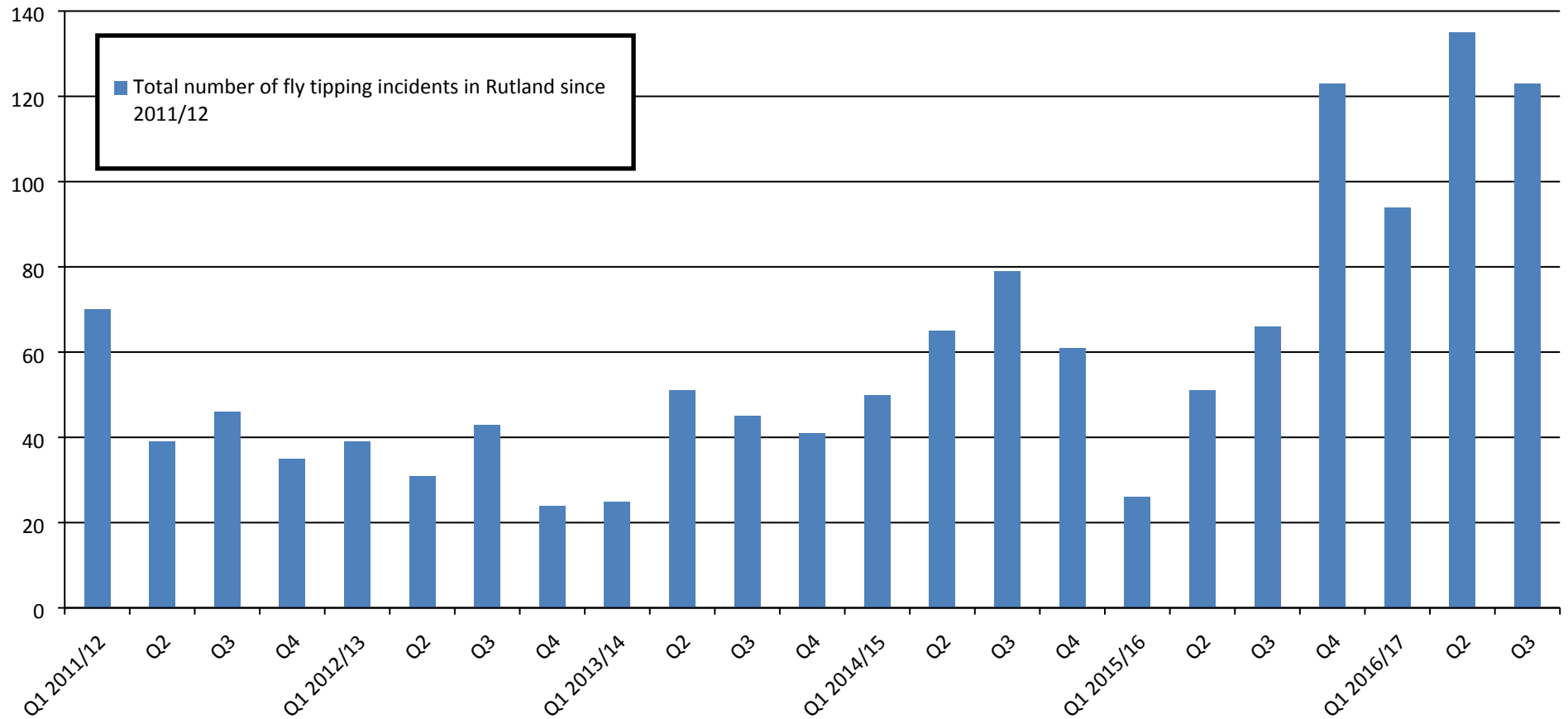
Fly Tipping



Location:

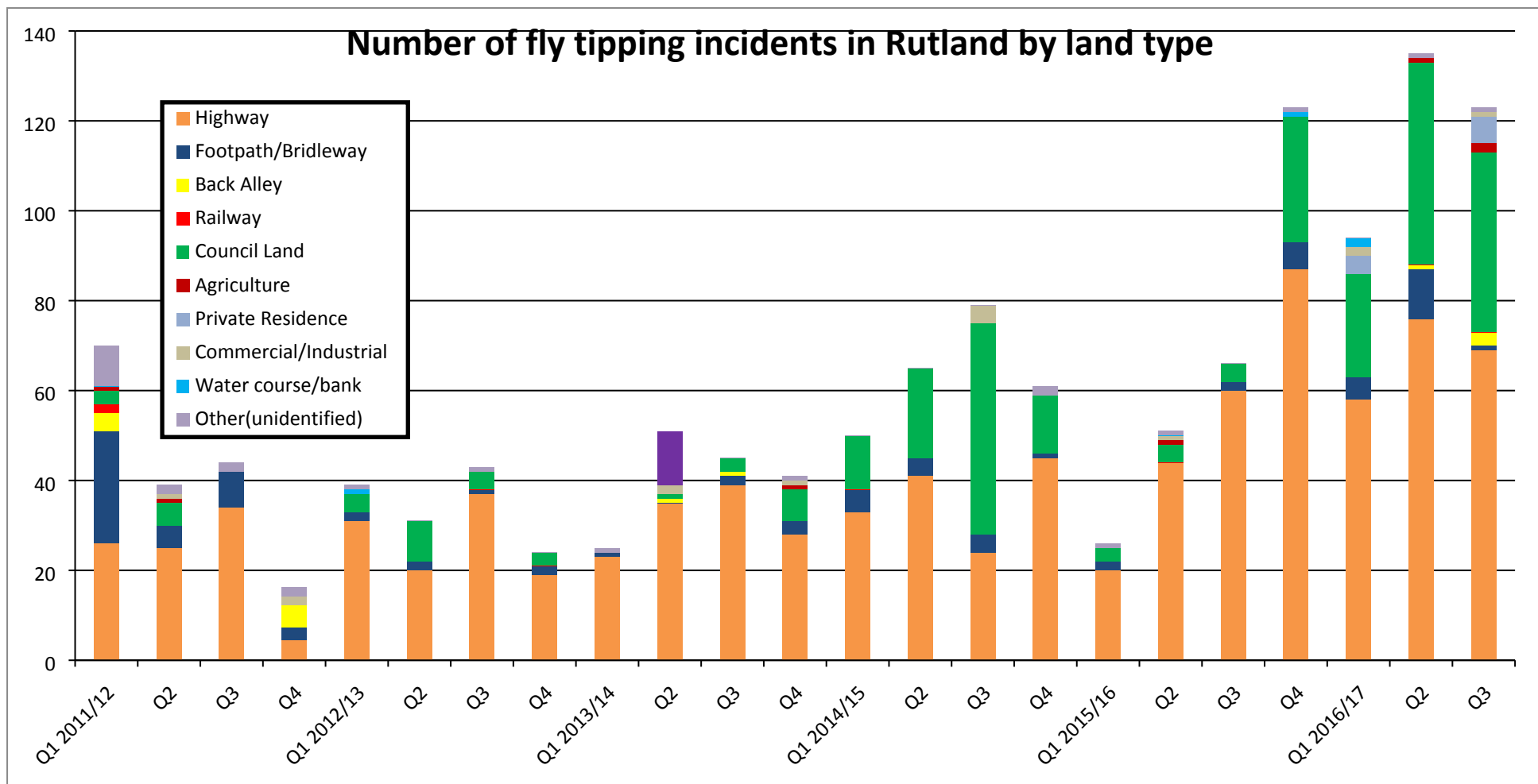
Analysis of the location of fly tipping incidents indicates little in the way of trends, other than there are clusters of incidents at the A1 laybys and also outside of Civic Amenities, but this is expected and is not a new trend.

Total number of fly tipping incidents in Rutland since 2011/12



Number of incidents:

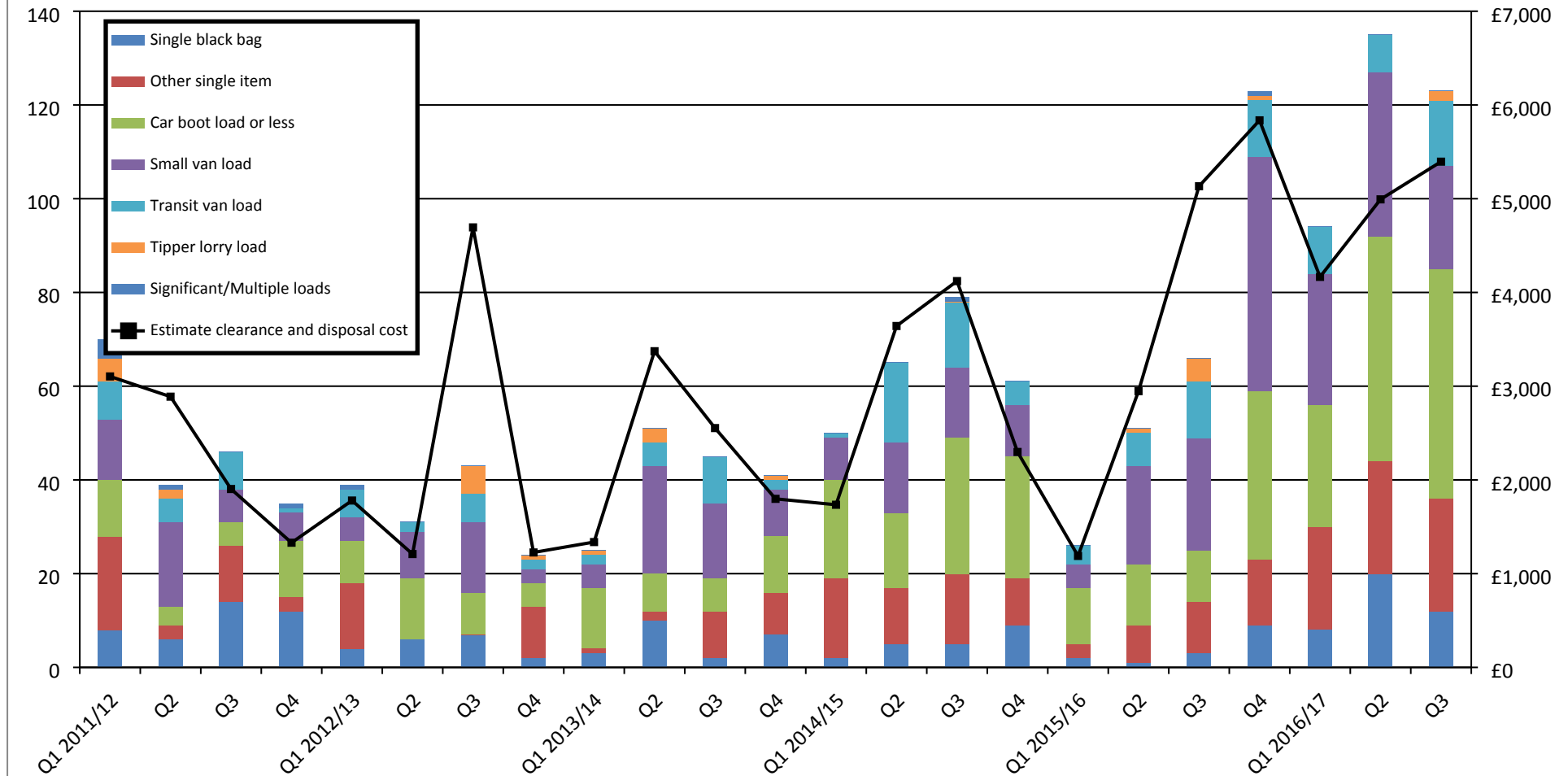
There has been a general increase in the number of fly tipping incidents in 2016/17. The recent spike in the number of Rutland incidents is also being seen nationally and in neighbouring Authority areas.



Land Type:

The Highway and Council land remain the key areas where fly tipping occurs. Incidents on private land, according to Council data, are rare and for clarity the Council only gets involved in clearing such fly tips where there are concerns over safety or where the presence of material is likely to encourage fly tipping on adjacent land that we are responsible for. Stamford and Rutland NFU have however stated that their members have also seen an increase in fly-tipping incidents in recent months. It is suggested that any future strategy to mitigate fly tipping should attempt to address the issue on both public and private land as far as possible.

Fly tipping incidents by size and estimated clearance cost



In terms of the size of the incident, there does not appear to have been a significant change, rather an increase across the board, with clearance and disposal costs following suit. To put this in context, the average quarterly cost to clear and dispose of our fly tipping in the first three quarters of 2016/17 is estimated to be £4,851, compared to £3,090 for the same period in 2015/16. These costs are nationally reported, and useful for benchmarking. They are however, extremely subjective and in reality the actual costs are likely to be higher when accounting for Contractors labour and other costs and the vast range of disposal rates for all the different materials. These costs are difficult to establish more accurately as some of the elements are wrapped up within the financial model of the Biffa Environmental Services Contract.